



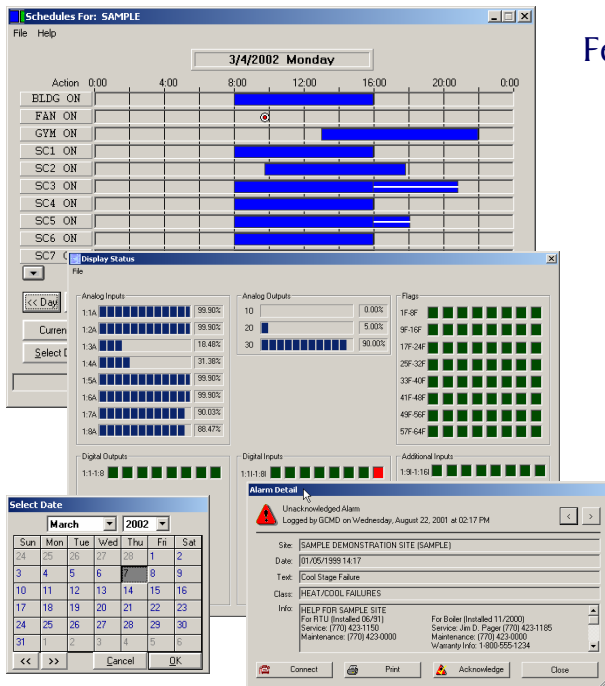
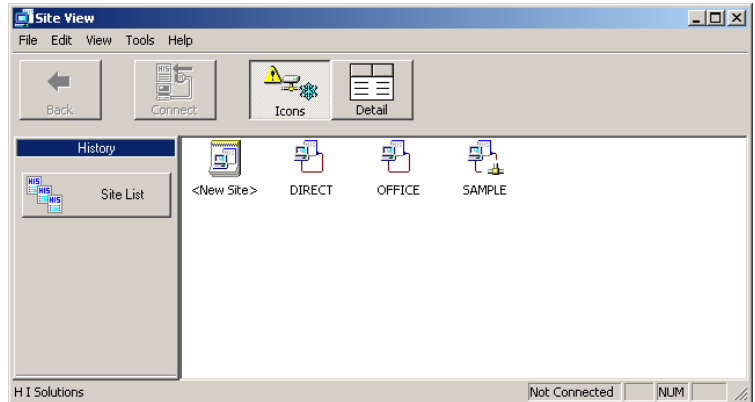
Field Commander™

PC Central Software Suite

Overview

The PC Central product provides a central control and reporting system for Field Commander systems. Its easy-to-use selection program enables users to issue commands or view, report, and exchange information with selected sites.

Tools are provided for system operation, maintenance, and scheduling. Full online documentation is provided. PC Central is built using industry standards, ensuring seamless interaction with 3rd party office suites and database tools. Message and alarm notification can be handled through industry standard email or text/alphanumeric paging systems.

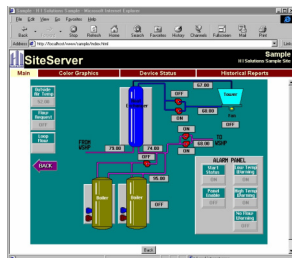


Features

- Device tree for navigation, status, and control
- Windows graphic display and modification of equipment schedules
- Alarm acknowledgement database for managing alarms
- On-line documentation
- Unattended answer of Field Commander inbound alarm calls
- Automatic emailing or printing of alarms and reports
- Easy to customize programs to meet user-specific requirements
- Direct access to unitary controllers
- DDE server to allow other Windows programs direct access to Field Commander data
- Windows cut and paste clipboard operations

Web Interface

SS101599

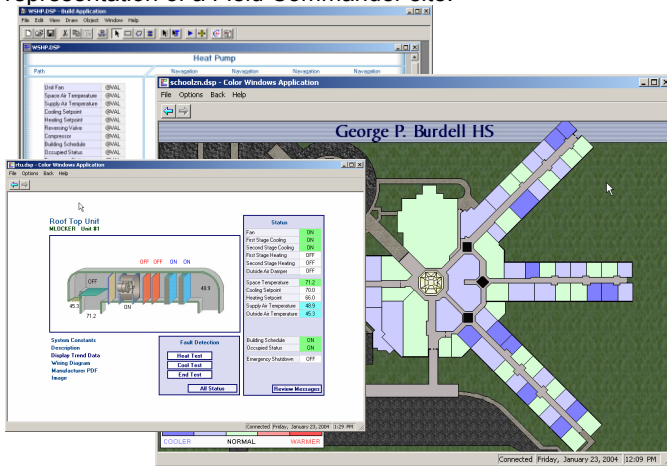


In addition, an optional web server program (PC Central SiteServer) is available which adds internet web browsing capabilities to the standard features of PC Central. This allows any computer with a standard browser to access Field Commander data and use color graphic displays for status and control.



Color Graphics

The user-friendly color graphics program displays a visual representation of a Field Commander site.

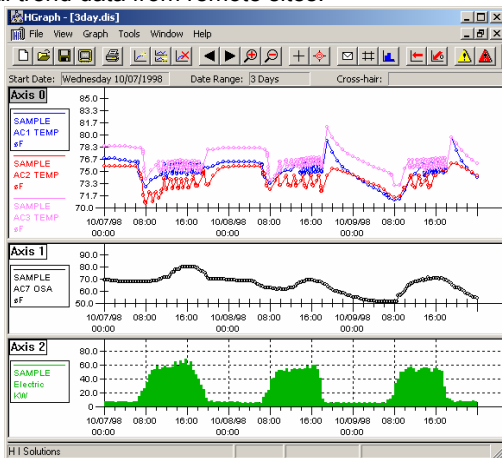


Features:

- Real-time point status (value, range shading, bar graphs, alarm indication, animations)
- Simple "point-and-click" control of devices
- Schedule display and control
- User permissions to control privileges for multiple users
- Screen-building program to create displays
- No imposed limit on the total number of tags
- Site-map linking with automatic site connection
- Template screens for use for multiple sites and controllers
- Library of image objects to speed up creation of new screens
- Support for variety of graphic formats including BMP, JPG, and PCX

Historical Data

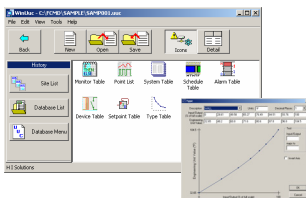
PC Central includes historical data programs that allow automatic collection, analysis, graphing, and reporting of historical trend data from remote sites.



Features:

- Interactive graphical display of historical data
- Report generation of detailed trend data or daily summarized data
- Reports that can be automatically printed, emailed, or published to a web site.
- Monitoring and logging of alarms and system messages
- Ability to monitor runtime of equipment and generate messages upon runtime or calendar events
- Exporting of historical data to Microsoft Excel or other spreadsheets (CSV)
- Creation of more compact data files using summarized data
- Ability to backup and restore historical data

Controller Programming



PC Central provides additional features for Field Commander unitary controllers. An offline database edit program facilitates controller creation and modification. A library of controller database templates provides a great starting point for a wide variety of controller applications. When connected to a system, the user can easily view current status, change programming parameters, and transfer databases to and from controllers. A unitary network monitor/diagnostic program displays LAN activity.

About H I Solutions

Since 1974 H I Solutions has provided innovative and cost-effective solutions for building management needs with computer-based automation systems for industrial, commercial, office, retail, educational, and healthcare facilities. Our distribution channels include a network of Independent Distributors, OEM, and National Accounts. Headquartered outside Atlanta, Georgia, H I Solutions is committed to offering quality engineering and performance, low overall cost, and unparalleled customer service.

