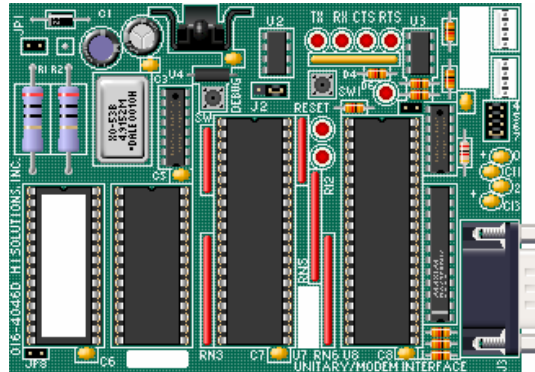
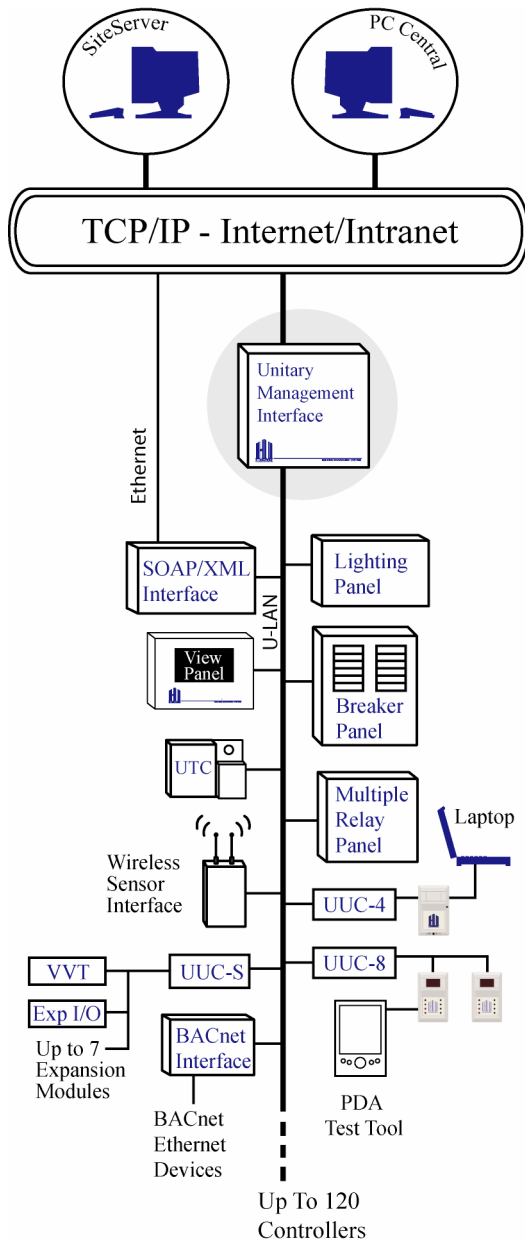


# Field Commander™

## Unitary Management Interface



### Overview

The Unitary Management Interface (UMI) is a compact micro-controller based device that is designed for use in distributed intelligence building automation systems. The UMI is intended to coordinate external communications with a unitary controller LAN. Like a Field Commander, the UMI supports automatic answering and remote dial-out capabilities and provides for multi-user password protection. The UMI is strictly a communications interface; control functions must be distributed to individual unitary controllers on the LAN.

At small sites, the UMI can sometimes be used in place of a Field Commander. The UMI user interface is designed to 'feel' like a Field Commander; it has the same command structure and is compatible with PC Central communication software. However, the UMI has none of the Field Commander's control capabilities except for schedules. Program control, demand control, monitors, flags, DDC, and trend must all be conducted by unitary controllers operating on the same LAN as the UMI. The UMI does maintain a message/alarm table for messages generated by unitary controllers.

### Commands

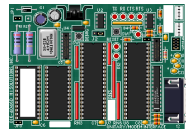
The UMI handles a subset of the Field Commander commands. In general, any command related to the user interface (displays, modem configuration, passwords, etc.) will be supported in the UMI. Commands related to Field Commander control such as monitors, device control, and demand control are not provided by the UMI.

Direct device commands may be issued to devices in unitary controllers. All named device commands are broadcast over the Unitary LAN. (The UMI does support schedules on named devices).

The UMI switches and lights are similar in function to the Field Commander. The UMI has no COLD switch but the DEBUG and RESET switches function like the Field Commander DEBUG and RESET



**Unitary Management Interface** **016 - 4046**



Dimensions: 3 1/4" x 4 1/2"  
 Power Requirements: +15VDC provided by UUC or external 150ma 15VDC power supply  
 Communications: RS-485 ULAN, RS-232 user interface port  
 Mounting: Snaptrack  
 Unitary Controllers: Up to 120

**UMI in Enclosure** **016 – 6501-2**



Dimensions: 5 1/2" x 7 3/4" x 1 1/2"  
 Power Requirements: 110 VAC wall cube included with assembly

**UMI & Terminal Server in Enclosure** **016 – 6501-1**



Dimensions: 5 1/2" x 7 3/4" x 1 1/2"  
 Power Requirements: 110 VAC wall cube included with assembly

**UMI & Terminal Server in Enclosure w/ Modem Connection** **016 – 6501-6**



Dimensions: 5 1/2" x 7 3/4" x 1 1/2"  
 Power Requirements: 110 VAC wall cube included with assembly

## About H I Solutions

Since 1974 H I Solutions has provided innovative and cost-effective solutions for building management needs with computer-based automation systems for industrial, commercial, office, retail, educational, and healthcare facilities. Our distribution channels include a network of Independent Distributors, OEM, and National Accounts. Headquartered outside Atlanta, Georgia, H I Solutions is committed to offering quality engineering and performance, low overall cost, and unparalleled customer service.

